

## An Innovative Electroless Nickel Co-Deposit Teflon™ for the Next Millenium

### TEF-COAT™

TE-COAT is a uniform Electroless Nickel/Teflon™ coating containing nickel phosphorus and Polytetrafluoroethylene (PTFE). This process deposits a durable, dry lubrication coating that combines the low coefficient of friction of PTFE in s strong, hard matrix of Electorless Nickel. Uniform deposit allow for plating to achieve 100% coverage even on complex shapes with no build up on edges.

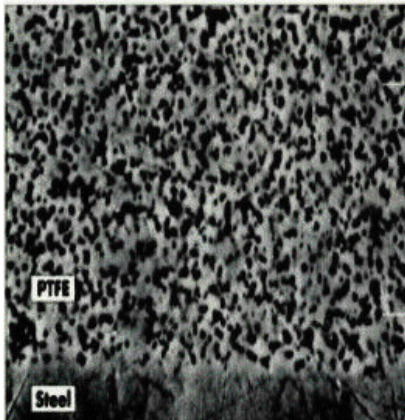


### Benefits

- Uniform Porous Free Deposit
- Excellent Corrosion Protection
- Natural Mold Release
- Complies with FDA And USDA standards

### Applications

- Automotive
- Marine
- Aerospace
- Food Service
- Hydraulics / Valves / Mold



North American EN, Inc  
 776 Lunt Ave  
 Elk Grove Village, Illinois 60007  
 Tel 847.952.3680  
 Fax 847.690.0171  
[www.northamericanen.com](http://www.northamericanen.com)

### Technical Data

Phosphorus Content - 10.5 – 12 by wt.  
 Teflon™ Content – 3-5% by wt.

#### Hardness

Knoops Hardness	
100g Load 3.0 mil Deposit	
As Plated.....	450 – 550
Heat Treated.....	900 - 1000

#### Ware

Taber Ware Test Index Value	
Wt. Loss mg/1000 Cycle	
As Plated.....	18 - 22
Heat treated 1hr 750 deg. F....	10 –15

#### Salt Fog

Salt Spray Test (Per ASTM B117)	
95 deg F 5%, NaCl, 1 mil deposit,	
Hours till first Corrosion Sight Steel .....	1000 hr

#### Melting Point

C .....	880
F .....	1620

#### Nitric Acid Test

Concentrated Nitric Acid 42 be'	
30 sec room temp 1.0 mil deposit .....	Meets or Exceeds

Electrical Resistivity - microhm-cm ..... 0.0105

#### Coefficient of Friction

vs steel (dry) .....	0.38
vs steel (lubricated) .....	0.20